



Installation Instructions for KPMI Part No: **82-83700** INDIAN® • SCOUT™ 4V 1200's • 2015-2019 Lightweight Racing Valve Spring Kit

A) 82-83700 Kit Includes

<u>Qty</u>	<u>Application</u>	<u>Description</u>
8 - Pcs	Intake / Exhaust	HT Steel Retainers
8 - Prs	Intake / Exhaust	Chrome Silicon Springs
8 - Pcs	Intake / Exhaust	H.T. Steel Basewashers*
8 - Pcs	Intake / Exhaust	Viton Seals*

**Notes:*

- 1) When installing the 82-83700 kit, the supplied basewashers and seals must be used instead of the OEM "tophat" seals.
- 2) A 9mm socket may be needed to ensure the 82-83707 seal is fully installed on the OEM guide. When properly installed the top of this seal should be 0.155" above the top of the OEM guide.

B) Recommended Installed Height - Intake/Exhaust

1. Installed Height	1.370" - 1.380"
2. Seat Pressure	65 #
3. Open Pressure at 0.360" Lift	173 #
4. Open Pressure at 0.450" Lift	200 #
5. Max Valve Lift	0.450"

**Note: KPMI Guides must be installed when using cams with greater than 0.415" valve lift.*

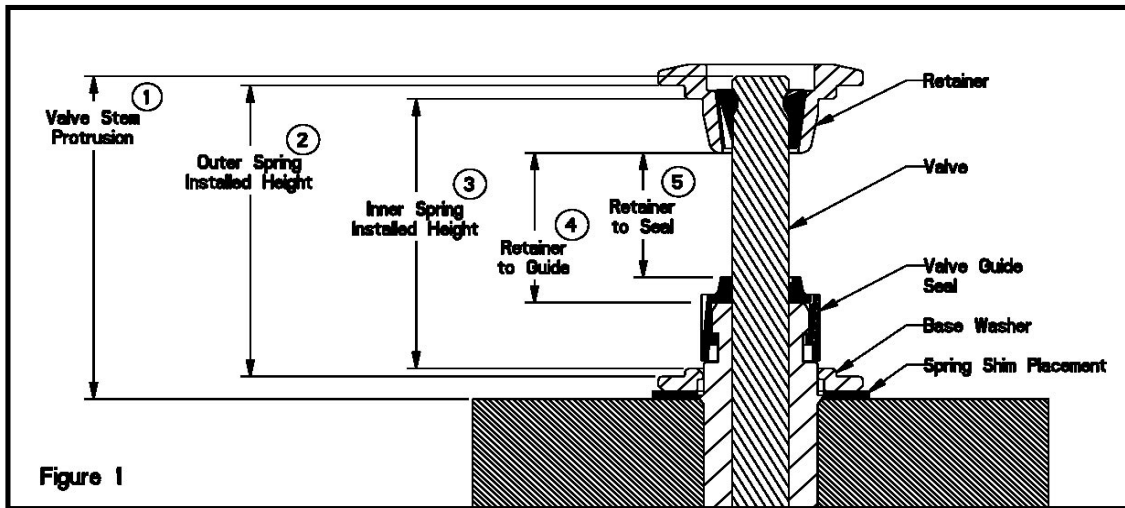
C) Notes

1. The difference between the installed height and the coil bind height is considered "Free-Travel"
The coil bind height is determined by compressing the spring or springs with the retainer and basewasher in place, a vice can be used for this operation, once springs are compressed measure the distance between the retainer and basewasher where the outer spring contacts them.
2. Free-travel should always be gross valve lift +.060" for safe operation.
3. Retainer to seal and retainer to guide clearance should also be gross valve lift +.060" for safe operation.
4. Failure to check valve train clearances can result in serious damage to an engine

Packaged By: _____

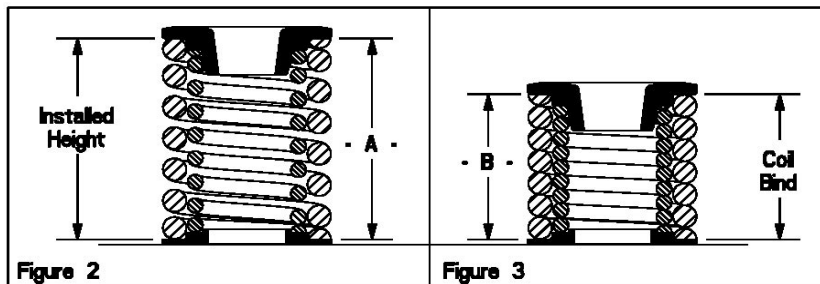
Date: _____

TECH TIPS



Valve Train Terminology

1. Stem Protrusion is measured from the tip of the valve stem to the cylinder head. See Figure 1.
2. Outer spring installed height is measured where the outer spring contacts the retainer and lower component when assembled. See Figure 1.
3. Inner spring installed height is measured where the inner spring contacts the retainer and lower component when assembled. See Figure 1.
4. Retainer to guide clearance is the distance between the valve guide (w/o the seal) and the bottom of the retainer, with the valve in the closed position. See Figure 1 and Notes 3 & 4.
5. Retainer to seal clearance is the distance between the valve stem seal and the bottom of the retainer, with the valve in the closed position. See Figure 1 and Notes 3 & 4.



Installed Height

1. In Figure 2 the installed height is measured from where the outer spring contacts the retainer and the basewasher. This measurement is taken when the valve, basewasher, retainer, and keepers are assembled in the cylinder head.

Coil Bind / Solid Height:

1. In Figure 3 the coil bind height is determined by compressing the spring or springs with the retainer and basewasher in place, a vice can be used for this operation, once springs are compressed measure the distance between the retainer and basewasher where the outer spring contacts them.

Notes:

1. The difference between the installed height and the coil bind height is considered "Free-Travel"
2. Free-travel should always be gross valve lift +.060" for safe operation.
3. Retainer to seal and retainer to guide clearance should also be gross valve lift +.060" for safe operation.
4. Failure to check valve train clearances can result in serious damage to an engine.