



Installation Instructions for KPMI Part No: **20-23600**

Harley Davidson • Evo Sportster • 2004 - '21

Harley Davidson • Twin Cam's (7mm Stems) • 2005 - '17

Harley Davidson • Buell XB9-XB12 • 2003 - '10

Lightweight Racing Valve Spring Kit For 0.675" Valve Lift

A) 20-23600 Kit Includes

<u>Qty</u>	<u>Application</u>	<u>Description</u>
4 - Pcs	Intake / Exhaust	HT Steel Retainers
4 - Prs	Intake / Exhaust	Chrome Silicon Springs
4 - Pcs	Intake / Exhaust	H.T. Steel Basewashers
4 - Prs	Intake / Exhaust	H.T. Steel Keepers
4 - Prs	Intake / Exhaust	Viton Seals

B) Recommended Installed Height - Intake/Exhaust

1. Installed Height **1.855" - 1.865"***
2. Seat Pressure **185 #**
3. Open Pressure at 0.675" Lift **450 #**
4. Max Valve Lift **0.675"**

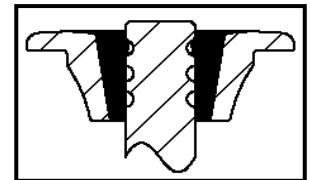


Figure A.

*Important Notice: Keepers must be installed with radius in the "upper" groove closest to the valve tip as illustrated above Figure A.

C) Notes

1. The difference between the installed height and the coil bind height is considered "Free-Travel"
 The coil bind height is determined by compressing the spring or springs with the retainer and basewasher in place, a vice can be used for this operation, once springs are compressed measure the distance between the retainer and basewasher where the outer spring contacts them.
2. Free-travel should always be gross valve lift +.060" for safe operation.
3. Retainer to seal and retainer to guide clearance should also be gross valve lift +.060" for safe operation.
4. Failure to check valve train clearances can result in serious damage to an engine

Packaged By: _____

Date: _____

TECH TIPS

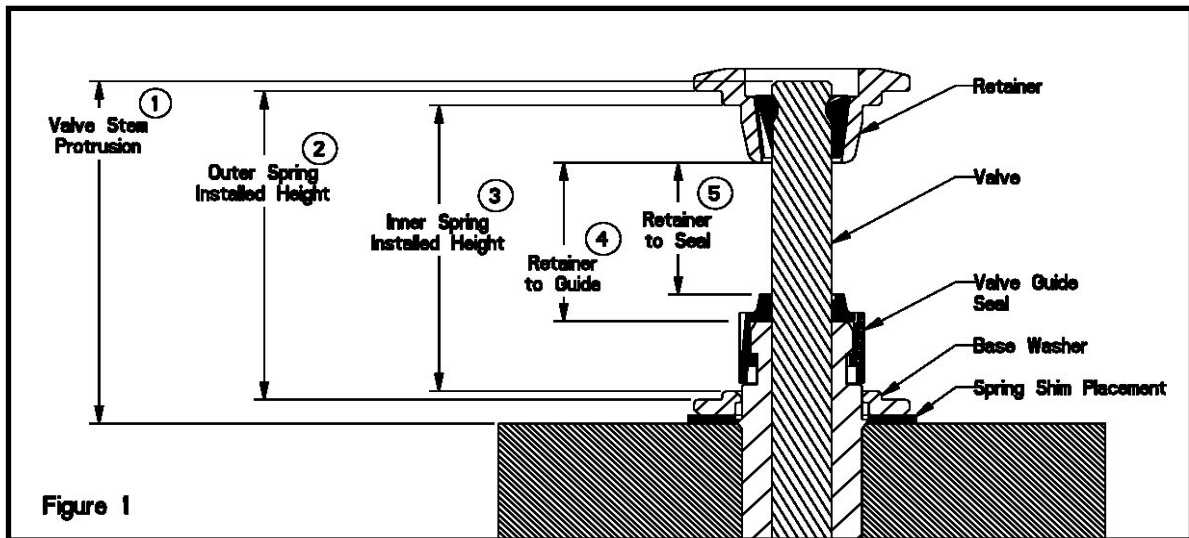


Figure 1

Valve Train Terminology

1. Stem Protrusion is measured from the tip of the valve stem to the cylinder head. See Figure 1.
2. Outer spring installed height is measured where the outer spring contacts the retainer and lower component when assembled. See Figure 1.
3. Inner spring installed height is measured where the inner spring contacts the retainer and lower component when assembled. See Figure 1.
4. Retainer to guide clearance is the distance between the valve guide (w/o the seal) and the bottom of the retainer, with the valve in the closed position. See Figure 1 and Notes 3 & 4.
5. Retainer to seal clearance is the distance between the valve stem seal and the bottom of the retainer, with the valve in the closed position. See Figure 1 and Notes 3 & 4.

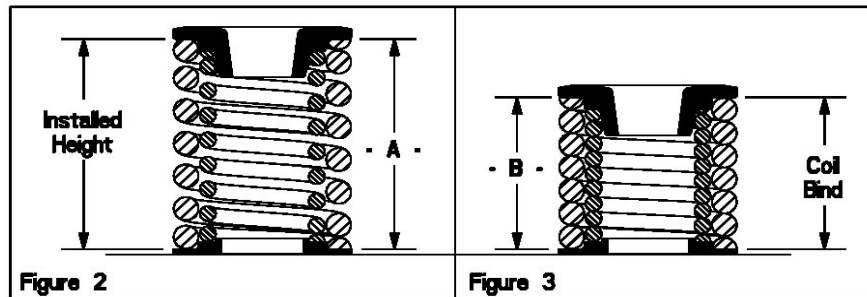


Figure 2

Figure 3

Installed Height

1. In Figure 2 the installed height is measured from where the outer spring contacts the retainer and the basewasher. This measurement is taken when the valve, basewasher, retainer, and keepers are assembled in the cylinder head.

Coil Bind / Solid Height:

1. In Figure 3 the coil bind height is determined by compressing the spring or springs with the retainer and basewasher in place, a vice can be used for this operation, once springs are compressed measure the distance between the retainer and basewasher where the outer spring contacts them.

Notes:

1. The difference between the installed height and the coil bind height is considered "Free-Travel"
2. Free-travel should always be gross valve lift +.060" for safe operation.
3. Retainer to seal and retainer to guide clearance should also be gross valve lift +.060" for safe operation.
4. Failure to check valve train clearances can result in serious damage to an engine.