



Installation Instructions for KPMI Part No: **30-32780** Honda • CRF450R/RX/WE • 2017-'22 Stainless Steel Conversion Intake Only Kit

For applications with low hours and/or apparent intake face recession, and exhaust components that meet factory specifications, you may consider KPMI's Intake Only Systems when performing necessary service. Bear in mind that KPMI does not advise partial conversions on race bikes and/or engines that have reached factory advertised service limits. Always consult with qualified professionals suited to inspect your machine.

A) 30-32780 Kit Includes

Note: (Intake and Exhaust parts are **NOT** interchangeable)

<u>Qty</u>	<u>Application</u>	<u>Description</u>
2 - Pcs	Intake	Titanium Retainers
2 - Prs	Intake	Chrome Silicon Springs*
2 - Pcs	Intake	H.T. Steel Basewashers
2 - Pcs	Intake	White Diamond Valves

*The springs for this kit include progressively wound Inner and Outer Springs, which should be installed with the tightly wound end seated on the H.T. Steel Basewashers.

B) Recommended Installed Height - Intake

1. Installed Height	1.335"-1.345"
2. Seat Pressure	50 lbs
3. Open Pressure at .400 lift	152 lbs
4. Open Pressure at .440 lift	162 lbs
5. Max Valve Lift	0.440"

C) Notes

- The difference between the installed height and the coil bind height is considered "Free-Travel"
The coil bind height is determined by compressing the spring or springs with the retainer and basewasher in place, a vice can be used for this operation, once springs are compressed measure the distance between the retainer and basewasher where the outer spring contacts them.
- Free-travel should always be gross valve lift +.060" for safe operation.
- Retainer to seal and retainer to guide clearance should also be gross valve lift +.060" for safe operation.
- Failure to check valve train clearances can result in serious damage to an engine

Packaged By: _____

Date: _____

TECH TIPS

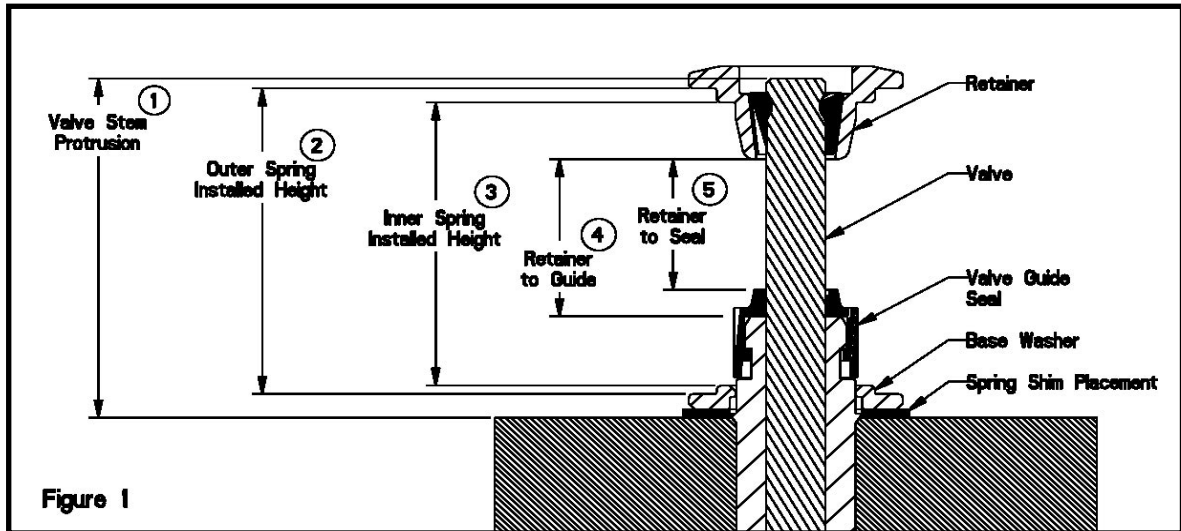


Figure 1

Valve Train Terminology

1. Stem Protrusion is measured from the tip of the valve stem to the cylinder head. See Figure 1.
2. Outer spring installed height is measured where the outer spring contacts the retainer and lower component when assembled. See Figure 1.
3. Inner spring installed height is measured where the inner spring contacts the retainer and lower component when assembled. See Figure 1.
4. Retainer to guide clearance is the distance between the valve guide (w/o the seal) and the bottom of the retainer, with the valve in the closed position. See Figure 1 and Notes 3 & 4.
5. Retainer to seal clearance is the distance between the valve stem seal and the bottom of the retainer, with the valve in the closed position. See Figure 1 and Notes 3 & 4.

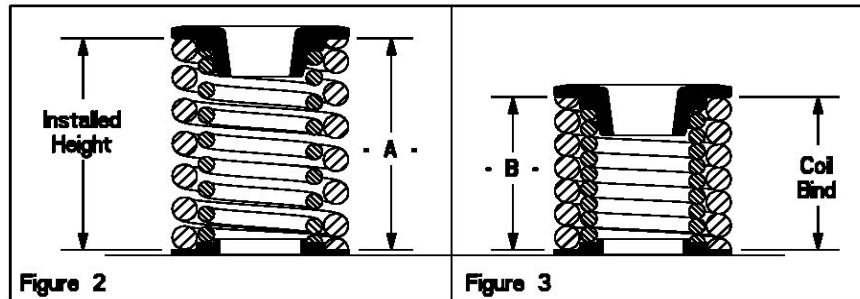


Figure 2

Figure 3

Installed Height

1. In Figure 2 the installed height is measured from where the outer spring contacts the retainer and the basewasher. This measurement is taken when the valve, basewasher, retainer, and keepers are assembled in the cylinder head.

Coil Bind / Solid Height:

1. In Figure 3 the coil bind height is determined by compressing the spring or springs with the retainer and basewasher in place, a vice can be used for this operation, once springs are compressed measure the distance between the retainer and basewasher where the outer spring contacts them.

Notes:

1. The difference between the installed height and the coil bind height is considered "Free-Travel"
2. Free-travel should always be gross valve lift +.060" for safe operation.
3. Retainer to seal and retainer to guide clearance should also be gross valve lift +.060" for safe operation.
4. Failure to check valve train clearances can result in serious damage to an engine.