

BLANK TRIUMPH® PUSHRODS HIGH PERFORMANCE



TRIUMPH

Application

Triumph® Pre-Unit 500 / 650 1951-1962

Triumph® 650 / 750 1963-1983

- KPMI® Pushrods are designed with thin-wall Chrome Moly tube for increased stiffness over O.E.M
- Male and female endpieces are made from hardened steel and offer increased wear resistance
- Blank Pushrod Kits come with one female endpiece pressed into the body and loose endpieces specified in the kit
- Custom length pushrods up to 9" in "B" dimension available upon request

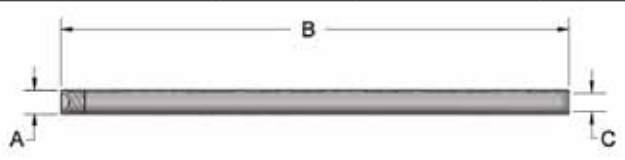


90512-2



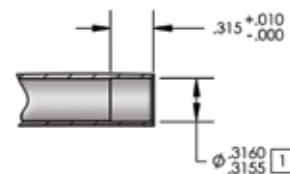
90512-4

Blank Pushrods • Steel • Chrome Moly Tube



A	Ø.371" OD
B	9.120" Overall Length
C	Ø.305" ID Before Machining

Machining Information:



1. Break ID edge only at .015 x 45°

	D	E	F	G
	R.156	0.420"	0.120"	0.310"

KPMI P/N	Model	Material	Kit Includes
90512-2		• Thin Wall Chrome Moly Tube • H. T. Steel Tips	2 Female Ended Pushrods / 2 Female Endpieces
90512-4		• Thin Wall Chrome Moly Tube • H. T. Steel Tips	4 Female Ended Pushrods / 4 Female Endpieces

Blank Pushrods Kits (sets of 2 and 4) can be machined to desired length and assembled by KPMI® for a flat fee of \$120.00. Orders can be placed by using the Custom Pushrod Order Form found on our website at www.kpmi.us/forms.html.

Retail Price List

KPMI P/N	Description	Retail
90512-2	H.T. Steel, 2 Female Ended Pushrods / 2 Female Endpieces	\$63.05
90512-4	H.T. Steel, 4 Female Ended Pushrods / 4 Female Endpieces	\$126.13

Manufacturing Valvetrain For 79-Years & 2-Generations

VISIT US AT WWW.KPMI.US